

brother Laser Printer HL-1230/1440/1450/1470N

# Quick Setup Guide

Read the "Safety Sheet" first to ensure that you use this printer safely.

Read this "Quick Setup Guide" before you set up the printer.

Before you can use the printer, you must set up the hardware and install the driver.

■ Identify the operating system on your computer (Windows® 95 / 98 / Me, Windows NT® 4.0, Windows® 2000 or Macintosh®).

■ The interface cable is not a standard accessory. Some computers have both a USB and a parallel port. Please purchase the appropriate interface cable for the interface you intend to use (Parallel, USB or Network). The USB interface option is not available on the HL-1230 printer.

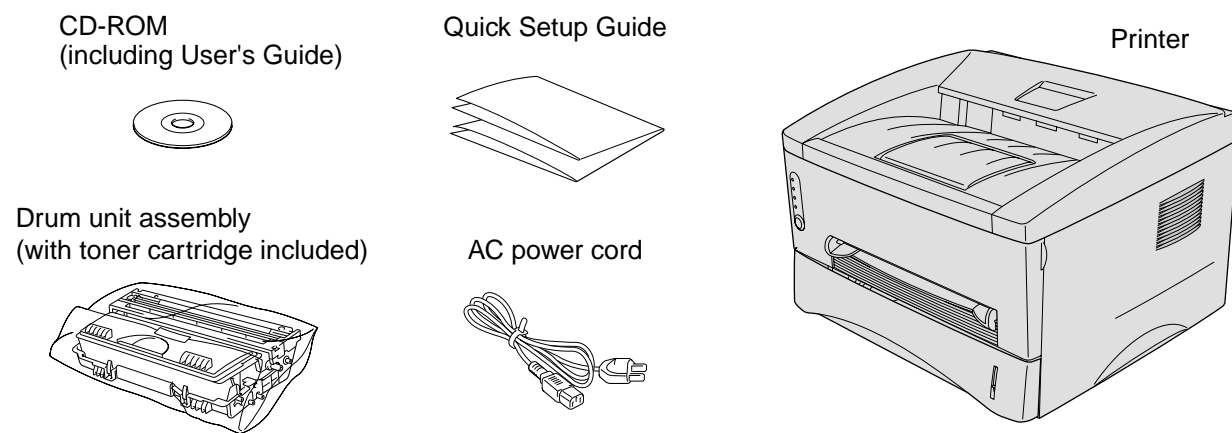
■ Follow the instructions in this guide for your operating system and interface.

## Carton Components

Carton components may differ from one country to another.

Save all packing materials and the printer carton. They should be used when shipping the printer.

Some illustrations and screen shots are based on the HL-1440/1450 printers.



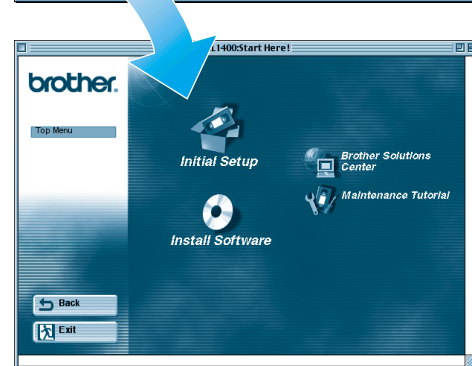
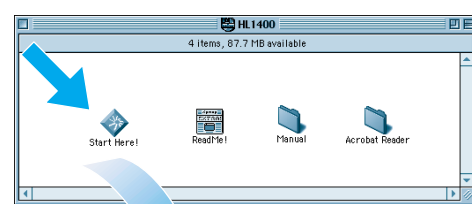
LJ5660001 Printed in China

## What is included on the CD-ROM

You will find a variety of information on this CD-ROM.



Windows®



Macintosh®

- Initial Setup**  
Instruction movie for machine setup and printer driver installation.
- Install Software**  
Install the printer driver and utilities.
- Maintenance Tutorial**  
Instructional movie for printer maintenance.
- Manual**  
View the User's Guide and Network User's Guide in PDF format. (Viewer included)

**Brother Solutions Center**  
The Brother Solutions Center (<http://solutions.brother.com>) is your one-stop resource for all your printer needs. Download the latest drivers and utilities for your printers, read the FAQs and troubleshooting tips or learn about special printing solutions.

## For All Users

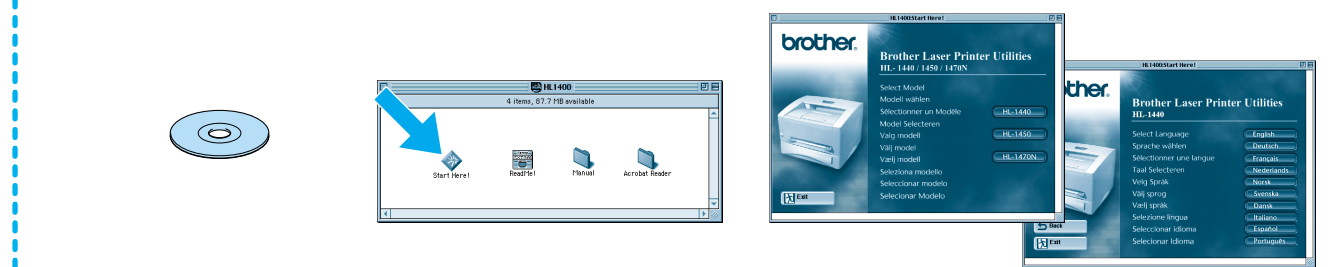
**Start** Insert the CD-ROM into the CD-ROM drive

**For Windows® users only**

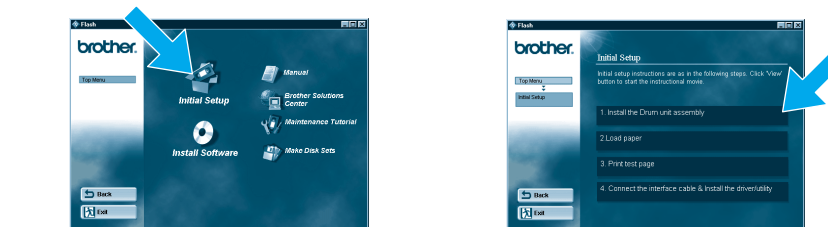
**For Macintosh® users only**



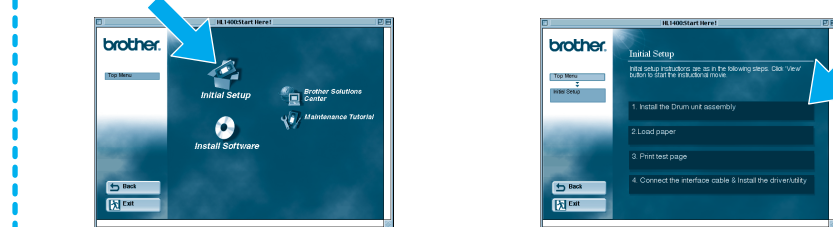
- 1 Insert the CD-ROM into the CD-ROM drive. The opening screen will appear automatically.
- 2 Click the model number of your printer. Select the language you want.



- 1 Insert the CD-ROM into the CD-ROM drive.
- 2 Double-click the Start Here! icon.
- 3 Click the model number of your printer. Select the language you want.

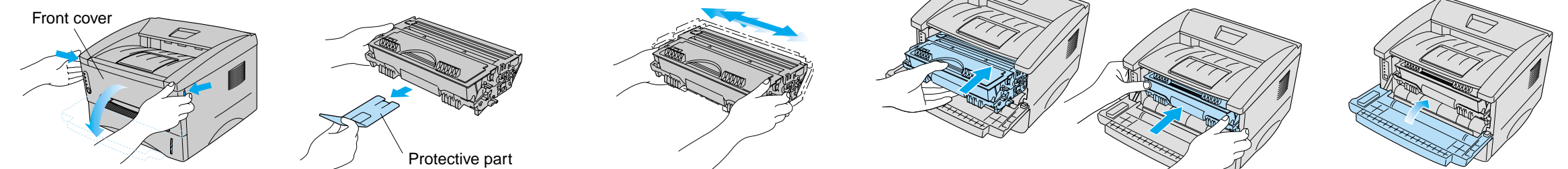


- 3 Click the Initial Setup icon.
- 4 You can view the Initial Setup instructions.



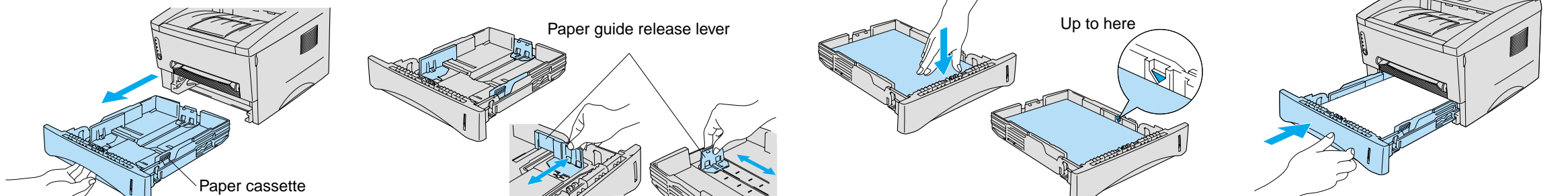
- 4 Click the Initial Setup icon.
- 5 You can view the Initial Setup instructions.

## Step 1 Install the drum unit assembly



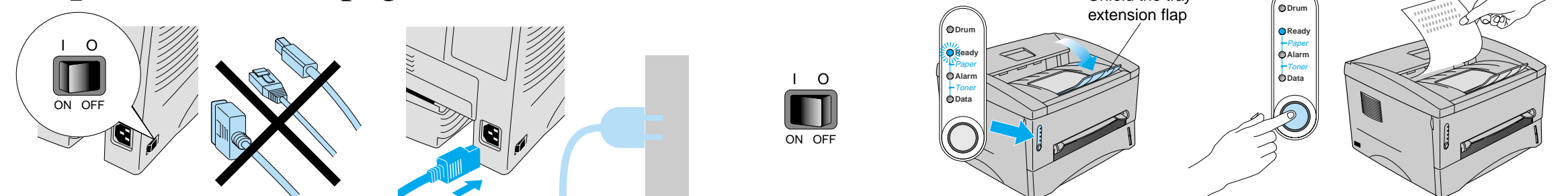
- 1 Open the front cover.
- 2 Unpack the drum unit assembly. Remove the protective part.
- 3 Rock it from side to side 5 or 6 times to distribute the toner evenly inside the assembly.
- 4 Install the drum unit assembly in the printer.
- 5 Close the front cover.

## Step 2 Load paper in the paper cassette



- 1 Pull the paper cassette completely out of the printer.
- 2 While pressing the paper guide release lever, slide the adjusters to fit the paper size. Check that they fit correctly into the slots.
- 3 Load paper in the paper cassette. Check that the paper is flat in the cassette and below the maximum paper mark.
- 4 Re-install the paper cassette into the printer.

## Step 3 Print a test page



- 1 Make sure the printer power switch is off. Do NOT connect the interface cable.
- 2 Connect the AC power cord to the printer, and then plug it into the AC outlet.
- 3 Turn the power switch on.
- 4 After the printer has finished warming up, the Ready LED stops blinking and stays lit.
- 5 Press the control panel button. The printer prints a test page. Check that the test page printed correctly.

Follow the instructions for your interface cable and operating system.

## For Parallel interface cable users (For Windows® users only)

### Step 4 Connect the printer to your PC & Install the printer driver

- Click "Connect the interface cable & install the driver / utilities."
- Select the parallel interface cable. (HL-1230 users will not see this screen.)
- Turn off the printer power switch.
- Connect the interface cable to your PC, and then connect it to the printer.
- Turn on the printer power switch.
- Follow the instructions on the screen.
- Note:** If "Add New Hardware Wizard" appears, click the Cancel button.
- Click the Next button.
- Click the Finish button. **The setup is now complete.**

## For USB interface cable users (For Windows® users only)

### Step 4 Install the driver & Connect the printer to your PC

**Note:** When the "Add New Hardware Wizard" appears on your PC, click the Cancel button.

**Note:** Make sure the USB interface cable is **NOT** connected to the printer, and then begin installing the driver. If you already connected the cable, remove it first.

- Click "Connect the interface cable & install the driver / utilities."
- Select the USB cable.
- Follow the instructions on the screen.
- Click the Next button.
- When this screen appears, make sure the printer power switch is on. Connect the USB interface cable to your PC, and then connect it to the printer. Click the Next button.
- Click the Finish button.

**For Windows® 98/Me users: The setup is now complete.**  
**For Windows® 2000 users : Go to Step 5.**

## For USB interface cable users (For Macintosh® users only)

### Step 4 Install the driver & Connect the printer to your Macintosh®

- Click "Connect the interface cable & install the driver / utilities."
- Follow the instructions on the screen, and restart your Macintosh®.
- Make sure the printer power switch is on. Connect the USB interface cable to your Macintosh®, and then connect it to the printer.
- Open the Chooser from the Apple® menu on the Macintosh®.
- Click the HL-1440/50/70N icon and select it. **The setup is now complete.**

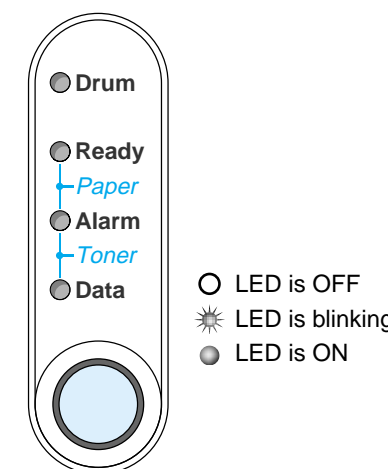
### Step 5 Setting your printer as the Default printer (For Windows® 2000 users only)

- Click **Start, Setting and Printers.**
- Select the Brother HL-1440/1450/1470N series icon.
- Click the File menu, and then select **Set as Default printer.**
- The setup is now complete.**

## For Network users (For HL-1470N users only)

After the administrator has made the required settings, install the driver referring to the "Installing the Driver for Network Users" section of the **Quick Network Setup Guide**.

### Control Panel



LED	
Drum	● Near end of life
Ready	○ Sleep mode → Press the button to wake up the printer.
	* Warming up (at 1 second intervals)
	● Ready to print
Alarm	* Printer error → Press the button to clear the error.
Data	○ No data
	* Receiving data
	● Data remaining in memory → Press the button to print any data in memory.
Ready + Alarm	* Paper jam, paper misfeed or no paper
Alarm + Data	* Toner low (every 5 seconds) ● Toner empty
Button	
Cancel printing	Printer stops printing and ejects the paper.
Reprinting	Printer will reprint the last job. When the Data LED is off, press and hold the button until all the LEDs light.